

Troubleshoot Guide

Exp#1.1 Observing Simple Harmonic Motion through webcam

ERROR 1: No Image acquisition adaptor available

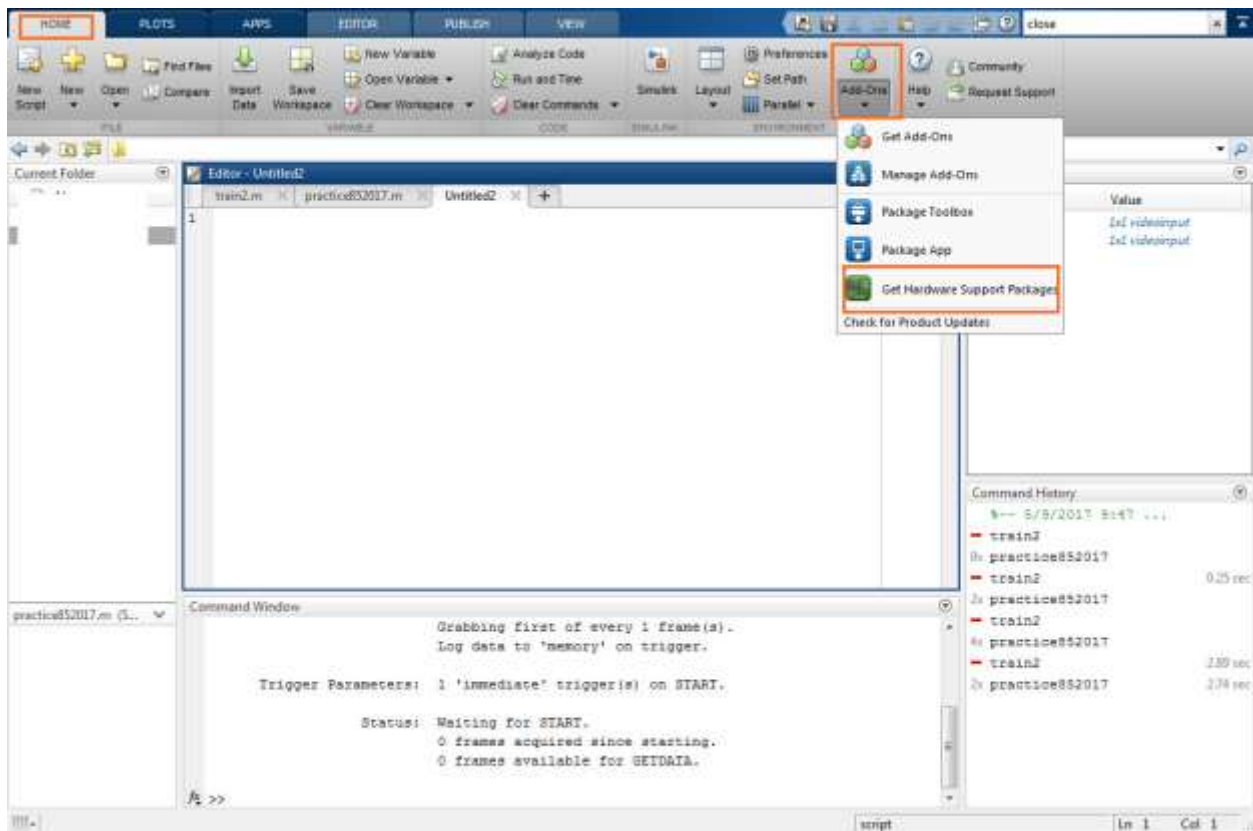
Error displayed in command windows:

“Error using videoinput (line 217) Invalid ADAPTORNAME specified. Type 'imaqhwinfo' for a list of available ADAPTORNAMEs. Image acquisition adaptors may be available as downloadable support packages. Open Support Package Installer to install additional vendors.”

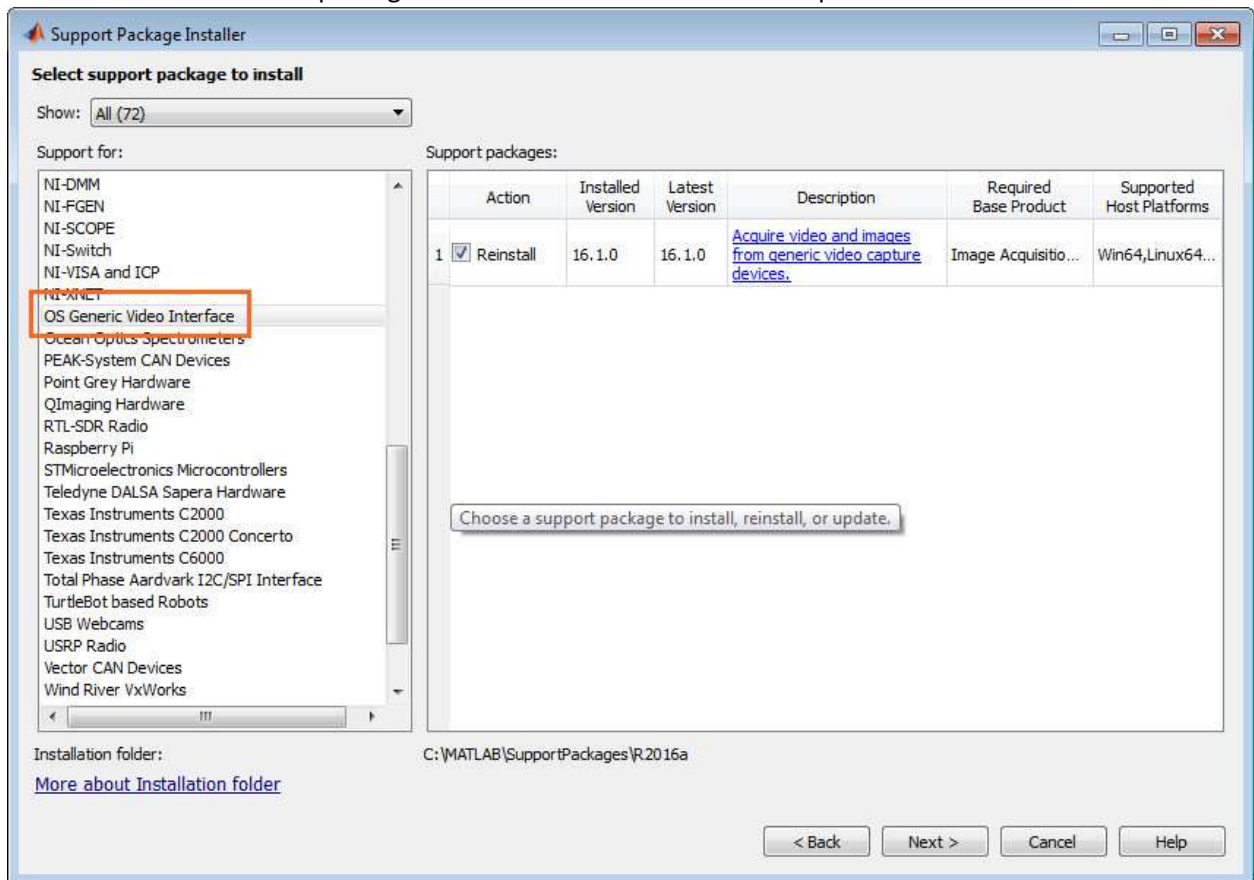
Solution: Install the Image Acquisition Adaptor from Hardware Support Packages.

If when executing the command “webcam” MATLAB throws image adaptor error, then proceed with following steps.

1. Go to Home > Add-Ons > Hardware Support Package



2. From the list of hardware packages look for “OS Generic Video” adaptor.



3. Install the package using your Mathwork's profile. If you don't have a profile just go to www.mathworks.com and create your account.
4. After installation proceed by executing the “webcam” again. You must see a preview of your attached webcam.