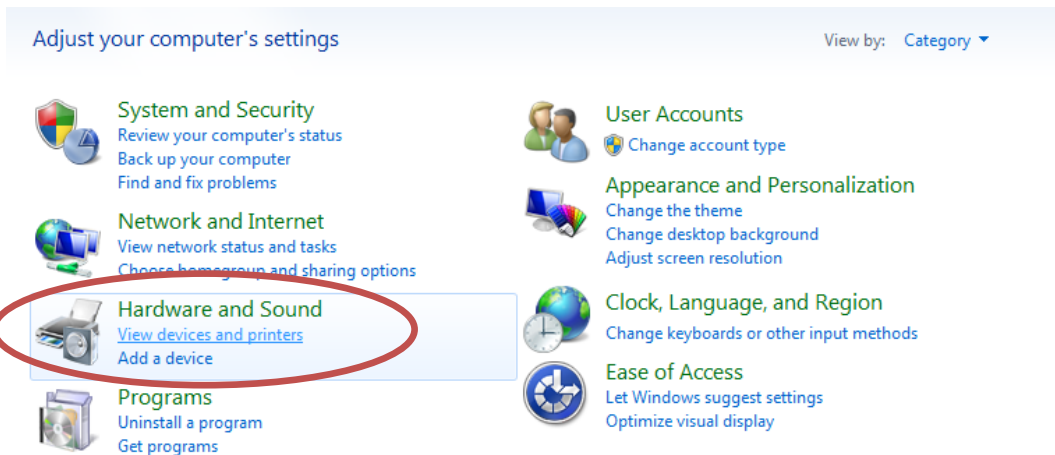


Physlab Printer Installation

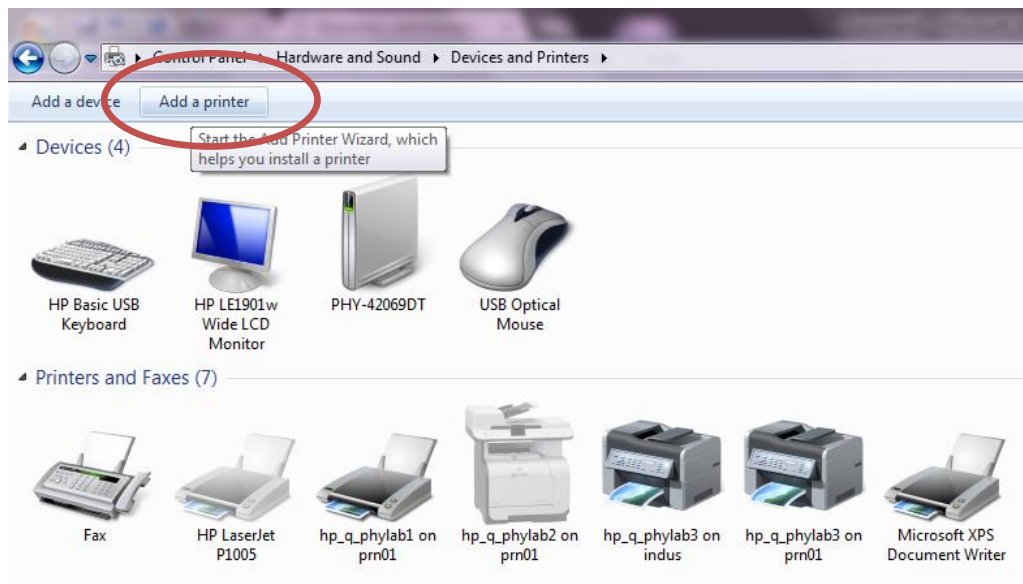
This procedure allows network printers to be installed on client workstations as local printers making them accessible to all local and domain users. However, the printing privileges are still controlled from the domain server.

To install the printer for all users, follow these steps:

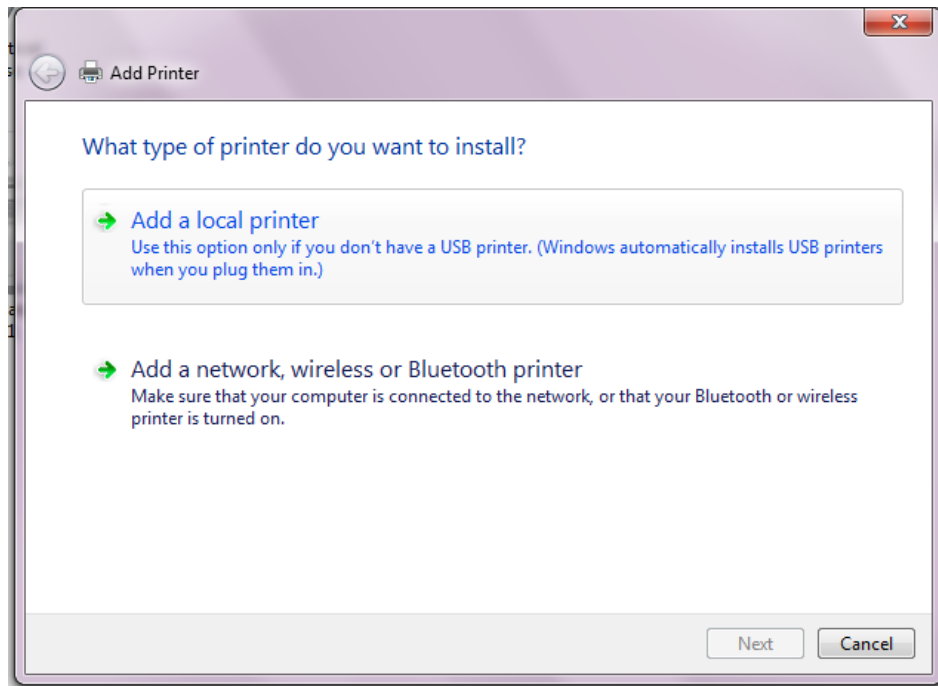
1. Click Start, click Control Panel and click "View Devices and Printers".



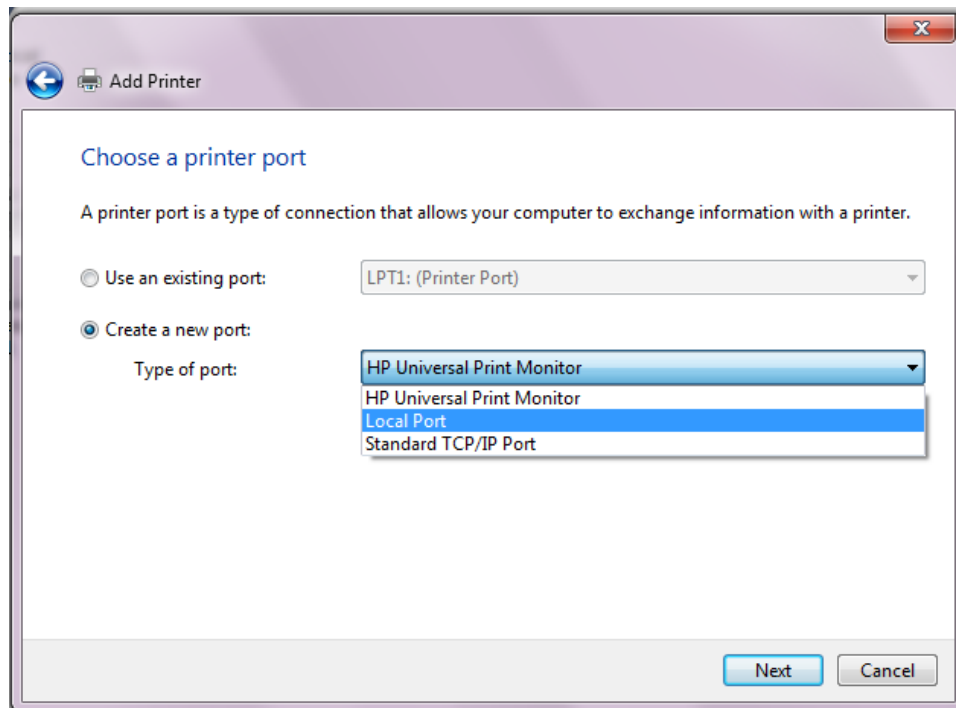
2. In the menu bar click "Add a Printer".



3. In the popup menu select "Add a local printer".

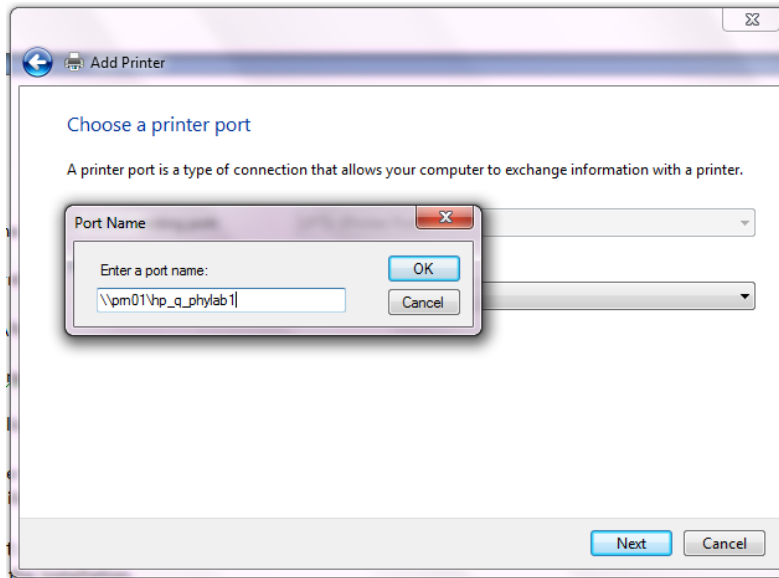


4. Select "Create a new port". Choose "Local Port" as the type of the port.

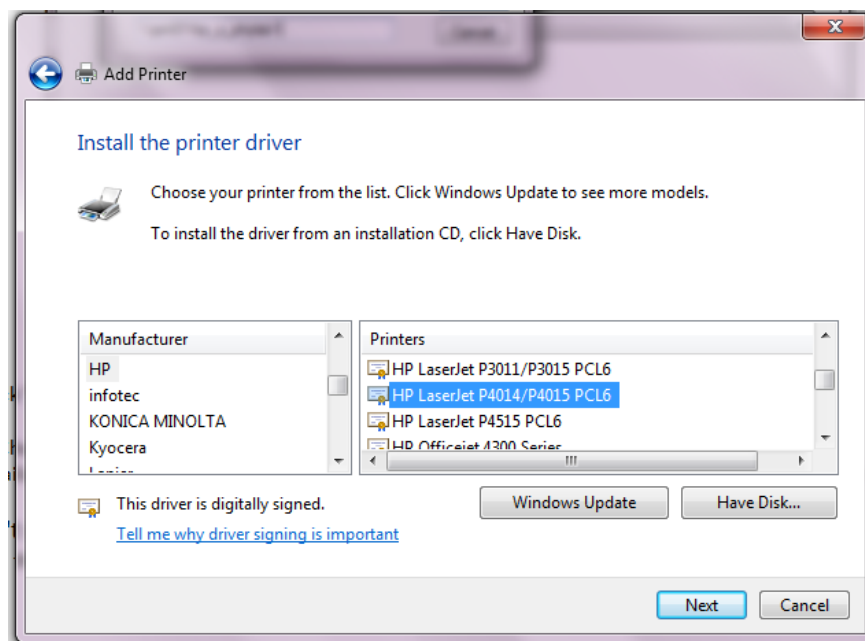


- In the box "Enter a port name", type the following address depending upon the printer to be installed.

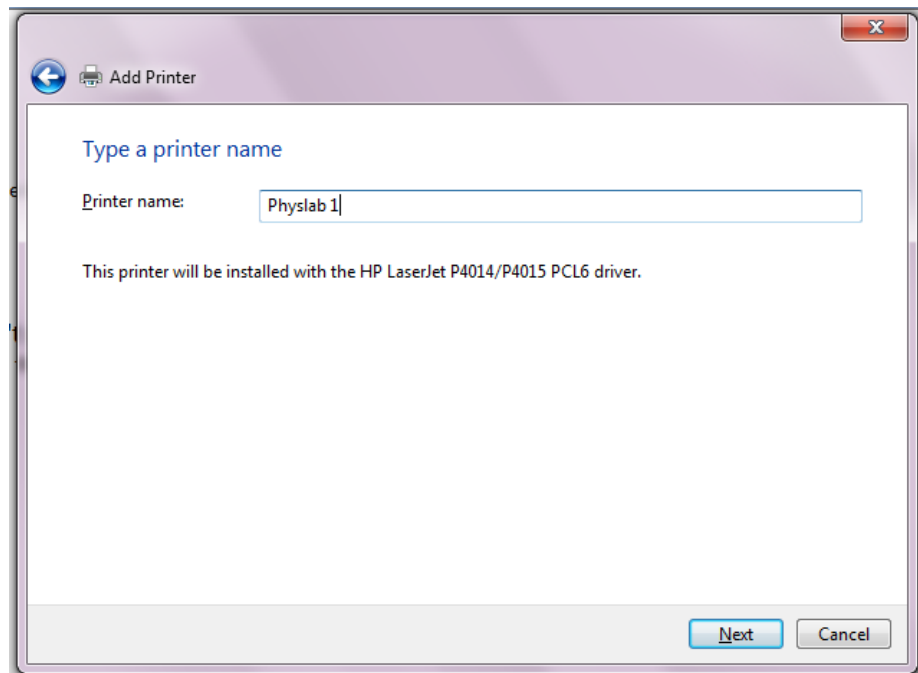
[\\prn01\hp_q_phylab1](#) or [\\prn01\hp_q_phylab2](#)



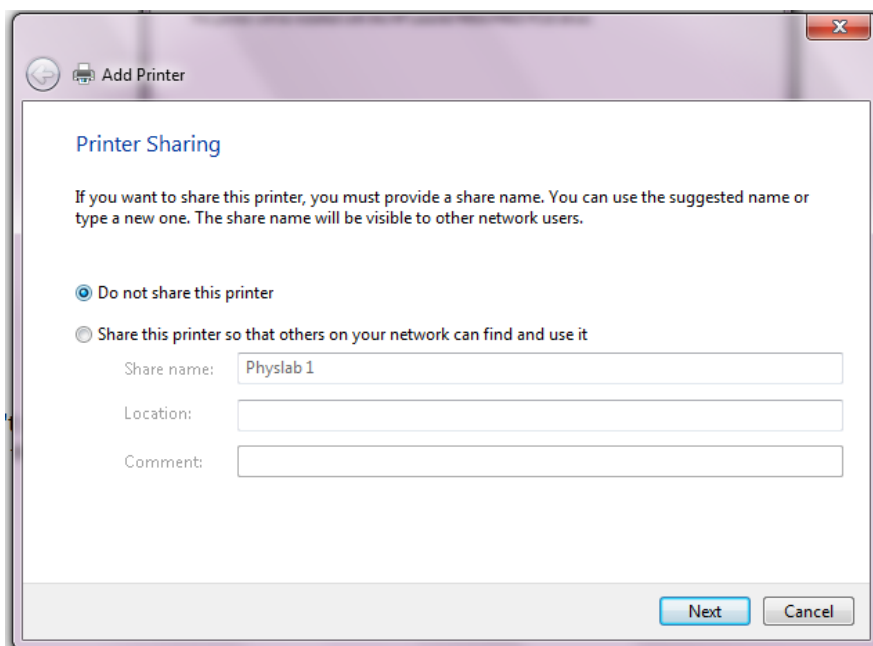
- Click "Next".
- Choose the printer's driver from the driver list. In our case, **(HP LaserJet P4014/P4015 PCL6)** . If you don't find this driver listed find the driver from the following network path. [\\sus\Device Drivers\Printers\HP\HP LaserJet P4010 P4510](#) or click the button Windows Update, wait for the process finishes and then look for the driver again.



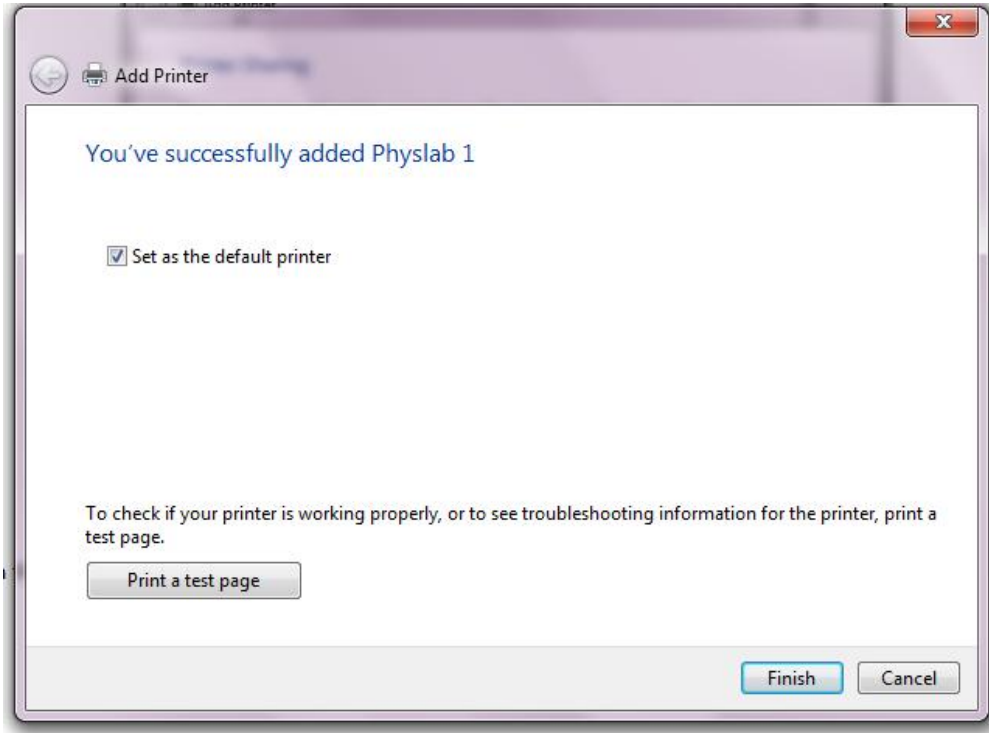
- Type in printer name as "Physlab 1" or "Physlab 2" depending upon the lab printer being installed.



- Don't share the printer as it is already shared over the network. Click "Next".



10. Set as default printer and click "Finish" to complete the installation.



11. You may check the printer from the windows "Devices and Printers" section.

