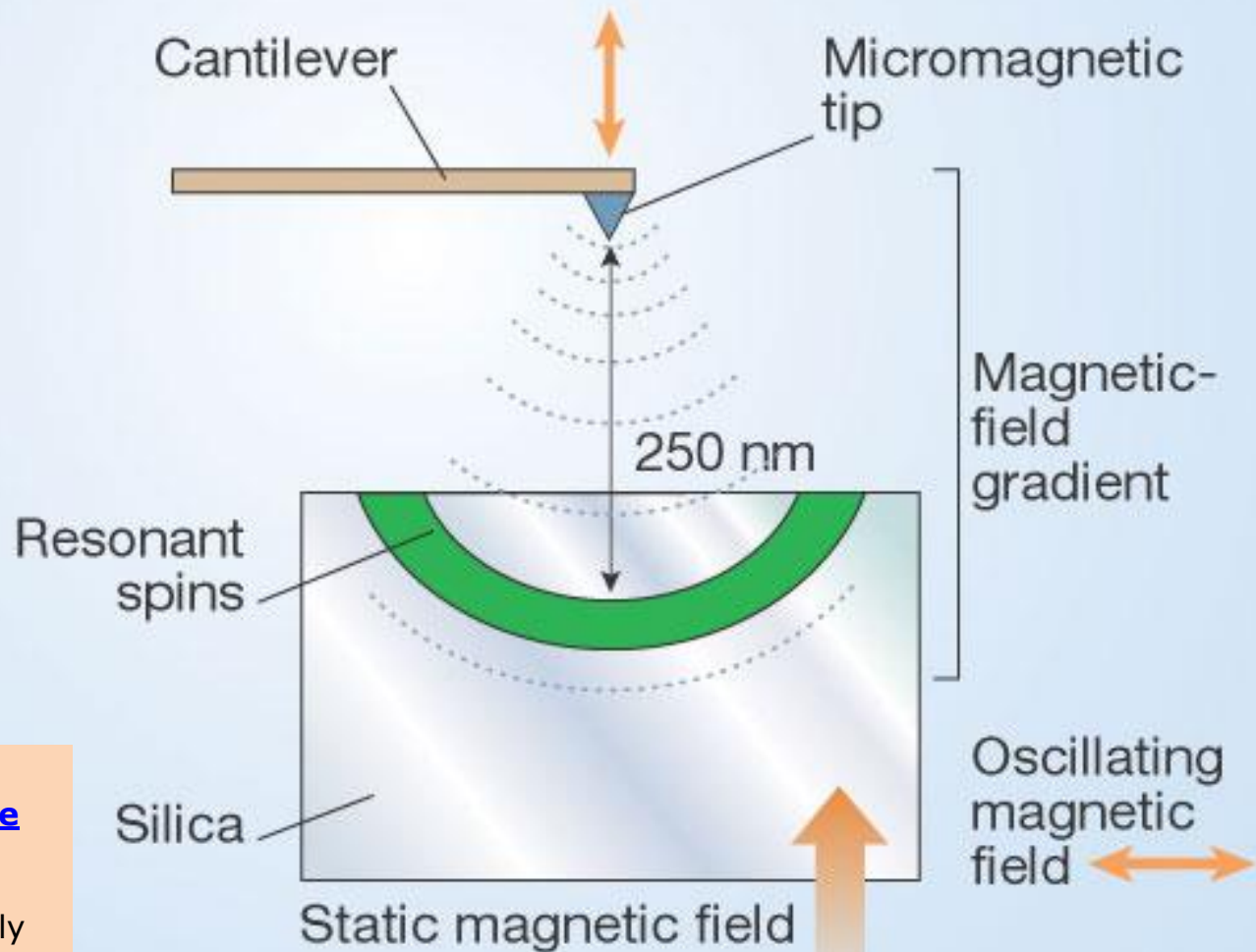


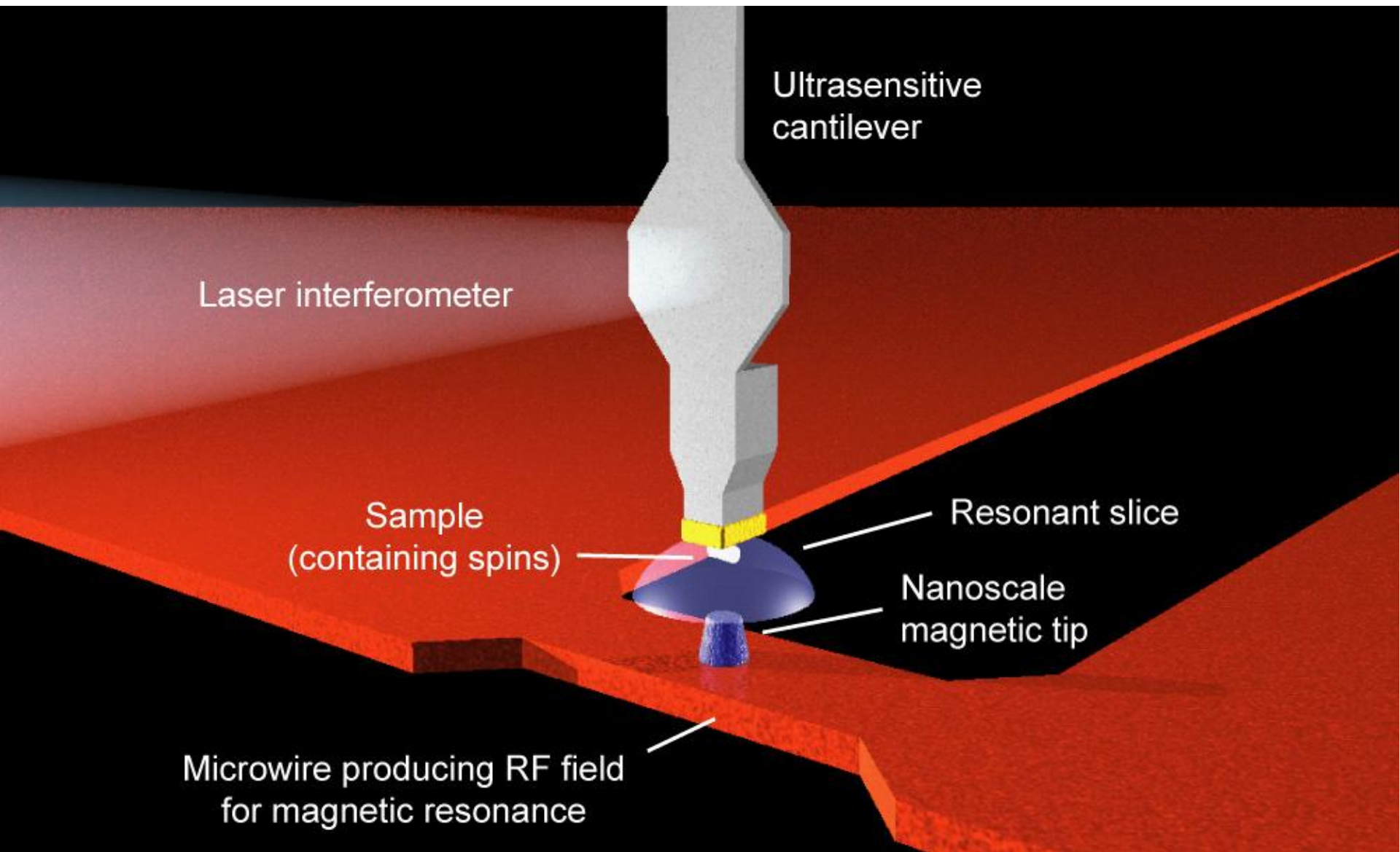
# Magnetic resonance force microscopy: Detecting a single electron spin



[Imaging techniques: Seeing single spins](#)

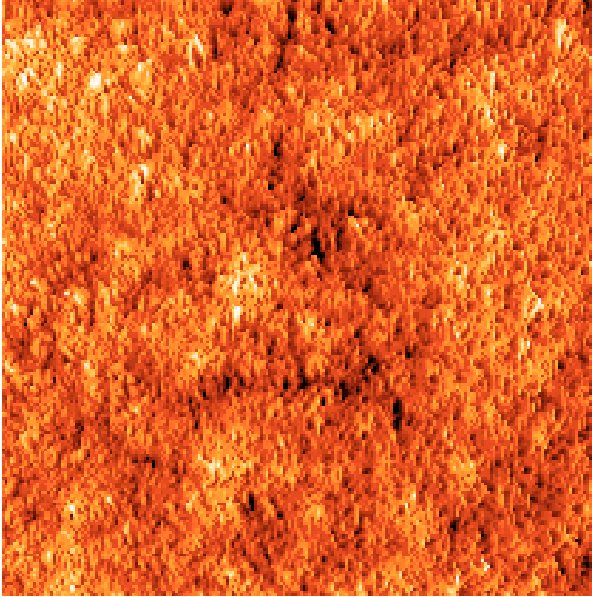
P. Chris Hammel  
*Nature* **430**, 300-301(15 July 2004)

doi:10.1038/430300a

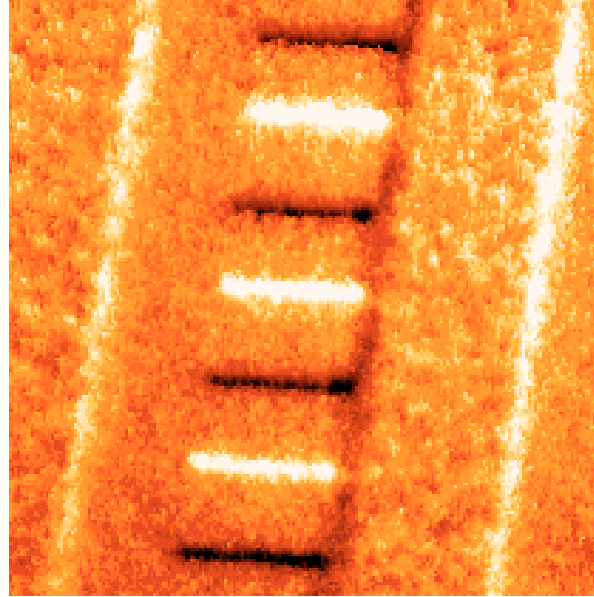


[http://web.mit.edu/degenlab/images/basics\\_of\\_mrfm.jpg](http://web.mit.edu/degenlab/images/basics_of_mrfm.jpg)

# Magnetic force microscopy

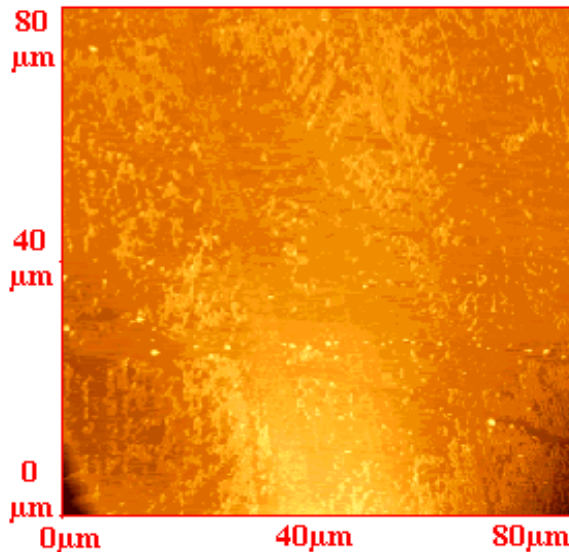


**Surface Texture**

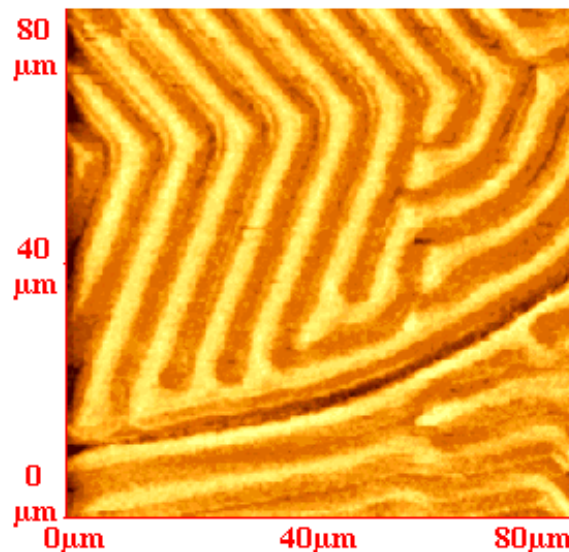


**Magnetic Force Image**

TOPOGRAPHY



MFM



<http://elchem.kaist.ac.kr/jhkwak/topometrixweb/magntfm4.htm>